

The Ultimate Solution!

For Implant Crown Cementation



Premier® Implant Cement™ Plus

Non-Eugenol Temporary Resin Cement

Versatile by design, Premier® Implant Cement™ Plus delivers strong, secure retention yet easy, non-destructive crown retrieval if necessary. With elastomeric properties, this resin cement flexes under force, absorbs shock and creates a tight marginal seal.

And with unsurpassed radiopacity¹, you'll appreciate the clear visibility on radiographs.



Secure retention
For long-lasting hold



Retrievable
Without damage to the crown,
abutment or implant



Easy to use
No etch, primers or adhesive required



Unsurpassed radiopacity
Excellent visibility on radiographs

Don't settle for the ordinary. Get more with Premier Implant Cement Plus!

premier® Inspired solutions
for daily dentistry®

Premier® Dental Products Company • 888-670-6100 • premierdentalco.com

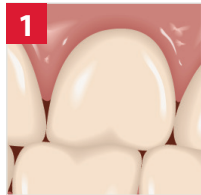
Premier® Implant Cement™ Plus

Non-Eugenol, Temporary Resin Cement for Implant Retained Crowns

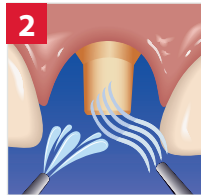
- ✓ Easy to use – *no etch, primers or adhesive required*
- ✓ Gel stage in just 2 minutes – *excess easy to remove*
- ✓ Unsurpassed radiopacity – *excellent visibility on radiographs*
- ✓ Secure retention – *for long-lasting hold*
- ✓ Retrievable – *without damage to the crown, abutment or implant*
- ✓ Available in 2 shades – *white and pink*



Premier Implant Cement Plus is easy to use



Check the fit. Complete all finishing procedures.



Rinse and dry abutment and interior of restoration.



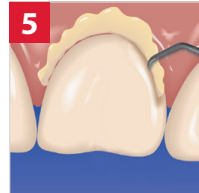
Bleed syringe. Mount new automix tip and then bleed the syringe again. This assures proper flow of base and catalyst.



Using a microbrush, place a thin film of cement along the inside wall of the cervical third, making sure to completely coat the margin with cement. You have 1.5 minutes of working time at room temperature.



Excess cement should be avoided. Too much cement can cause future restoration retrieval to be difficult.†

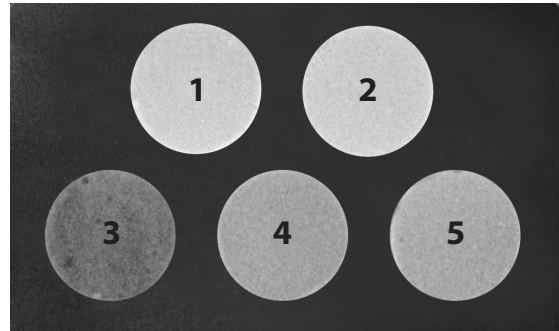


Firmly seat the crown and hold in place until initial set (gel phase) occurs in 2-2.5 minutes. Safely remove excess cement before final set. It is imperative to remove all excess cement.

Properties

Working Time	1.5 minutes at room temperature
Gel-phase	2-2.5 minutes at 98°F (37°C)
Set Time	4-5 minutes at 98°F (37°C) from the start of mix
Film Thickness	15 µm

Premier Implant Cement Plus offers unsurpassed radiopacity with excellent visibility on radiographs.



- 1 Premier® Implant Cement™ Plus – Shade Original (Pink)
- 2 Premier® Implant Cement™ Plus – Shade White
- 3 Improv®
- 4 Implantlink® Semi Xray
- 5 Retrieve™ DC

Standard Pack

- 1-5ml Automix Syringe, 10 Mix Tips
 3001550 Shade Original (Pink)
 3001551 Shade White

Value Pack

- 3-5ml Automix Syringes, 25 Mix Tips
 3001555 Shade Original (Pink)
 3001556 Shade White

Accessories

- 3001451 Automix Dual-barrel Syringe Tips (25)



premier® Inspired solutions for daily dentistry®



Premier® Dental Products Company • 1710 Romano Drive, Plymouth Meeting, PA 19462, USA

Phone 888-670-6100 • 610-239-6000 • Fax 610-239-6171 • premierdentalco.com • E-mail: info@premierdentalco.com

1. When compared to competitive implant cements – data on file / † Any excess cement (regardless of chemical make-up or brand) that remains in the sulcus around an implant could lead to peri-mucositis, peri-implantitis or implant failure if not removed immediately. Improv, Implantlink and Retrieve are not trademarks of Premier. / ©2023 Premier Dental Co. | All Rights Reserved