



GC INVESTMENTS

GC

GC Investments

GC America's Phosphate Bonded Investment materials were developed with your crown and bridge techniques in mind. GC offers all types of investment materials from specifically adapted to Hi-Noble and long-span superstructures to non-precious and pressable investments. These are all extremely high-quality products which have been specifically designed to produce consistently accurate castings and meet the production requirements of the modern dental laboratory.

- **GC Fujivest® II** - A carbon-free phosphate bonded investment for precision crown and bridge castings of all dental alloys, including Ni-Cr and Co-Cr
- **GC Fujivest® Premium** - Suitable for all types of dental alloys, especially non-precious castings
- **GC Fujivest® Platinum** - Suitable for precious and semi-precious alloys, especially for precious alloys, highly precise castings, and long-span superstructures
- **GC MultiPressVest®** - Investment material specifically adapted for multiple press ceramic techniques
- **G-CERA® ORBIT VEST** - Phosphate-bonded refractory die material for the direct layering of ceramic materials for the manufacture of inlays, onlays, crowns and veneers
- **G-CERA® VEST** - A high-density, super fine, refractory material with the same expansion curve as most porcelains

What the Industry Leaders are Saying...

"For nearly five years now, GC Fujivest II has been our investment of choice for all alloys. It is seasonally very consistent, allows more than enough working time needed on those 15+ units rings, while delivering bubble-free castings."

*Albert Tassi, CDT
Albert Tassi Dental Studio
Elmhurst, IL*

"We have tried numerous investment materials to achieve maximum results in our laboratory. We have chosen GC Fujivest Platinum and Premium as the investment to utilize for our crown and bridge work, including large span bridges. We find predictable results in fit and esthetics. Great job, GC! Keep up the good work in providing laboratories the products to achieve our goal of quality."

*Bob Posey, CDT
Posey Dental Laboratory Inc.
Langhorne, PA*

"Finally we have an investment offering extremely fine detail reproduction with controlled expansion for any type of high noble, semi, and non-precious alloy. I was amazed by the superior fit of end casted objects, especially the results on long spanned bridges and implant substructures."

Amir Juzbasic, MDT

"GC MultiPressVest is one of the best pressable investments we have ever used. We use it for all of our pressable cases. The fine detail is unsurpassed and it is also easy to deinvest. I highly recommend GC MultiPressVest to any laboratory doing pressed restorations."

*Luke Kahng, CDT
LSK121 Oral Prosthetics
Naperville, IL*

"Our lab has used GC Fujivest Premium for quite some time with great success. We love how robust the material is and how exact and detailed the castings are. GC Fujivest Premium has been very consistent and reliable for our laboratory. We use it for everything from non-precious to hi-noble alloys. I would highly suggest GC Fujivest Premium for any dental laboratory wanting precise and predictable results."

*Iliya Stein
Creative Dental Ceramics
Des Plaines, IL*



GC Fujivest® II



TRIED AND TRUE

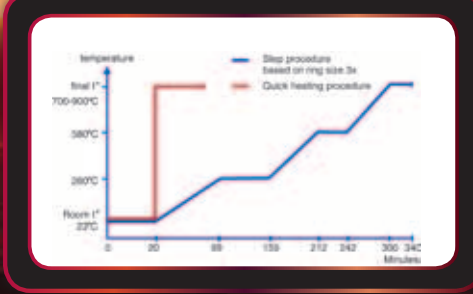
Virtually no other material meets the need for a versatile investment as much as GC Fujivest II. Fundamental development objectives for the laboratory have been strikingly achieved by the careful selection of raw materials and the qualitative and quantitative composition of the powder mix.

ALL-AROUND PERFORMANCE

A distinct advantage of GC Fujivest II is that users can choose between quick heating and stepped heat progression without the problem of expansion differences. This feature alone will not satisfy all the requirements of a genuine all-around investment material. The option of deciding between investment with or without a ring, with unlimited choice of muffle sizes, is equally important. Problem-free use with all alloys, including non-precious metal alloys, is impressive too. Compensation for the variable contraction behavior of the alloy is achieved in the simplest way possible, merely by diluting the liquid with water. This allows precise expansion control, ensuring good accuracy of fit.

PHYSICAL PROPERTIES

Powder/liquid ratio	90g : 19.8ml
Mixing time	1 minute
Working time.....	6 minutes
Setting time.....	20 minutes
Fluidity.....	63mm
Casting ring hardness.....	ring/ringless
Devesting hardness.....	soft to medium-hard
Preheating	conventional or quick heating (20 minutes) at final temperature



- Universally applicable with quick heating and stepped heating methods
- Usable with or without a casting ring
- Usable with all dental alloys including Co-Cr and Ni-Cr

EASE OF USE

GC Fujivest II is easy to incorporate into an existing practice and ideal for laboratory use, as a result of product characteristics consistently geared to practical suitability for the laboratory. This starts with a greatly reduced mixing time. Investing can begin after just one minute of mixing. The fluid consistency allows accurate reproduction even down to the finest detail. Here again, the practical orientation of GC Fujivest II is evident. The investment retains a uniform consistency throughout the investment time, effectively preventing the inclusion of air bubbles. The investment time of six minutes is long enough to invest large models, even at higher room temperatures, without any time pressure. After just 20 minutes setting time, the investment can be placed in a preheated furnace at the final temperature either ringless or with a ring and an unlimited choice of ring sizes.



HIGH-QUALITY FOR PREVENTION OF FAILURES

Prevention of failures in the investment material is also of practical importance, especially with large investments - another problem focused on during the development of GC Fujivest II. Diversity alone is no guarantee of suitability for laboratory use. The surface quality of the final casting is equally important. Here again, the reformulated GC Fujivest II powder mix gives greatly reduced surface roughness, especially with non-precious metal alloys.



GC Fujivest® Premium



VERSATILE AND ROBUST - YET SIMPLE

When it comes to a versatile investment, GC Fujivest Premium simply outperforms nearly every other material. GC Fujivest Premium is the only material to allow technicians to select either quick or progressive heating without worrying about expansion control. But what precisely makes it a genuine all-around investment material? The fact that you can now choose between investments with or without a ring, and an unlimited range of ring sizes. And to top it off, GC Fujivest Premium is fully compatible with all types of dental alloys, including non-precious metal alloys.

PHYSICAL PROPERTIES

ISO/DIN 9694.2 ;20 minute setting 120 minute setting
Setting expansion2.00% 2.50%
Thermal expansion1.00% 1.00%
Total expansion (Linear)3.00% 3.50%
Initial setting time9 minutes 9 minutes
Working time6 minutes 6 minutes
Compressive strength7.5 MPa 7.5 MPa
Measured at 23°C		



- Suitable for all types of dental alloys
- Accommodates ringless techniques in both quick and slow-heating procedures
- Offers a wide expansion range of up to 5% - implant complicated suprastructures with non-precious alloys is now safe and straightforward
- Optimal expansion control by liquid dilution ensures a highly accurate fit

EXACT CASTINGS AND SMOOTH SURFACES - IN ONE AND THE SAME SOLUTION

It only takes one little step to compensate for variable contradiction of the alloy: dilute with water! What's more, not only does this keep expansion under control, it also ensures an accurate fit - time after time. No amount of precision can make up for mediocre quality final castings. This is how our reformulated GC Fujivest Premium powder mix lays the groundwork for superior final castings by substantially diminishing surface roughness, especially with non-precious metal alloys.

USER-FRIENDLINESS - CENTRAL TO PRACTICALLY EVERYDAY USE

One of our key considerations in developing GC Fujivest Premium was everyday use at the workplace. You will notice straight away that it has been fine-tuned to the needs of the modern dental laboratory. Start creating highly accurate reproductions, down to the finest detail, thanks to the material's smooth and fluid consistency. With the investment remaining even and consistent from start to finish during processing, you can finally say goodbye to irritating, time-wasting air bubbles. And while we're on the subject, with GC Fujivest Premium, time is on your side as you now have six minutes to finish the investment, thus taking off the pressure and providing you with plenty of time to invest more complex bridgeworks - even at higher room temperatures.

RELIABLE AND CONSISTENT HIGH-QUALITY FOR A PERFECT FIT - EVERY TIME

Consistent quality from one batch to the next is an absolute must, especially in this day and age when success revolves around uniform results, at a cost you can afford. But ensuring products comply with specifications is also about careful monitoring. This is why we have watertight controls - careful checks on each and every batch. Not just once, but several times throughout the overall manufacturing process. All our investment materials undergo a variety of inspections, from initial raw materials to the finished product. Each inspection is based on standard benchmarking criteria - before the final batch is released.



GC Fujivest® Platinum



A MORE EXACT FIT THAN EVER BEFORE

For castings to fit accurately, you need to be able to control the overall expansion process - precisely. As the front-runner in its market, renowned for its expertise in phosphate bonded investments, GC has already redefined the benchmark with its product GC Fujivest Super. Now GC is proud to unveil GC Fujivest Platinum - everything you've come to expect from a company of this caliber, but now better than ever. The benefit to you is the perfect expansion control for both quick and step-heating method.

SMOOTH SURFACES - PUTTING EVERY FINE DETAIL IN THE SPOTLIGHT

A high-precision investment for crown and bridge work, GC Fujivest Platinum also works to eliminate surface roughness. Its powder mix contains a carefully balanced fine-particle filler for significant reductions in roughness, enhancing the surface quality of the final cast. With its improved, exceptionally smooth surface, dental technicians are in a prime position to reproduce every minute detail, right down to finely feathered edges.



- Specifically developed for high-precision castings by reaping the maximum benefit of precious, semi-precious and Pd base alloys
- Offers precisely the amount of expansion needed without any material inconsistency
- Facilitates a perfect fit, even in implant superstructures and long-span bridges
- Extremely smooth casting surfaces
- Devest easily, freeing staff up to concentrate on other, more pressing important tasks
- Must use with ring technique

USER-FRIENDLINESS AND ALL-AROUND PERFORMANCE - THE "ALL-IN-ONE" SOLUTION

As a high-quality investment material unmatched in its field, GC Fujivest Platinum fulfills all the requirements of the modern dental laboratory. It also makes controlled investment possible with a working time of up to five minutes. Worrying about the critical issue of edge stability is a thing of the past, the investment's stable compressive strength takes care of the problem for you. And devesting is easy and fast, leaving you free to devote attention to more pressing matters. GC Fujivest Platinum represents an ideal blend between the technical benefits of traditional materials and more qualitative benefits such as the time-savings offered by quick-heating processes.

RELIABLE AND CONSISTENT HIGH QUALITY FOR A PERFECT FIT - EVERY TIME

Consistent quality from one batch to the next is an absolute must - especially in this day and age when success revolves around uniform results, at a cost you can afford. But ensuring products comply with specifications is also about careful monitoring. This is why we have watertight controls - careful checks on each and every batch. Not just once, but several times throughout the overall manufacturing process. All our investment materials undergo a variety of inspections, from initial raw materials to the finished product. Each inspection is based on standard benchmarking criteria - before the final batch is released.

PHYSICAL PROPERTIES

ISO/DIN 9694.2 ;	20 minute setting	120 minute setting
Setting expansion.....	0.50%	0.90%
Thermal expansion	0,80%	0.60%
Total expansion (Linear)	1.30%	1.50%
Initial setting time.....	6 1/2 minutes.....	6 1/2 minutes
Compressive strength	5 MPa	5 MPa
Working time.....	5 minutes	5 minutes
Flow	13.5 cm	13.5 cm
Measured at 23°C		
100% Expansion liquid		



GC MultiPressVest®



FINE-GRAINED PHOSPHATE BONDED INVESTMENT FOR PRESSING

- Fine-grained phosphate bonded investment produces smooth and detailed pressings
- Creamy consistency ensures easy and accurate investing
- High thermal stability makes it suitable for the quick heating as well as for the conventional heat-up technique

CARBON-FREE PHOSPHATE BONDED INVESTMENT FOR PRESSABLE CERAMICS

GC America has specifically developed a new investment material adapted to multiple press ceramic techniques offered within the GC Initial™ PC pressable system and the GC Initial IQ – One Body, Press-over-Metal/Zircon system.

CHARACTERISTICS AND BENEFITS

- Fine-grained phosphate bonded investment produces smooth and detailed pressings
- Makes it suitable for the quick heating as well as for the conventional heat-up technique

SPECIALLY DEVELOPED FOR MULTIPLE PRESS CERAMIC TECHNIQUES LIKE:

- All ceramic press techniques with GC Initial PC: crowns, inlays and veneers
- Press ceramic over metal structures with GC Initial IQ – One Body, Press-over-Metal
- Press ceramic over zirconium structures with GC Initial IQ – One Body, Press-over-Zircon

PHYSICAL PROPERTIES

ISO/DIN 9694.2 ;	20 minute setting	120 minute setting
Setting expansion.....	0.75%	1.50%
Thermal expansion	1.00%	0.90%
Total expansion (Linear)	1.75%	2.40%
Initial setting time.....	6 1/2 minutes	6 1/2 minutes
Compressive strength	5 MPa	5 MPa
Working time.....	5 minutes.....	5 minutes
Flow	13.5 cm.....	13.5 cm

Measured at 23°C



G-CERA® ORBIT VEST

REFRACTORY DIE MATERIAL

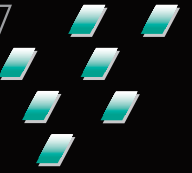
G-CERA ORBIT VEST is a phosphate bonded refractory model material for the production of all-ceramic crowns, inlays, onlays and laminate veneers. It allows porcelain to be built directly upon the refractory model, provides high strength to withstand repeated firings and has outstanding dimensional stability. Available in two single mix formulations - crowns/veneers and inlays - with different expansion rates to compensate for each application.

FEATURES AND BENEFITS

- Eliminates the need to compensate for shrinkage and expansion when producing crowns, veneers or inlays
- Single mix formula eliminates refractory problems from restoration-type, ceramic-type and firing temperature
- Separates from impression easily - resists breakage
- Eliminates the need to compensate for shrinkage and expansion when producing crowns, veneers or inlays
- Easy to mix - provides smooth model surface
- Works with all-ceramic and metal bonded porcelains, as well as low fusing porcelains
- Matches expansion curve of porcelain to a higher degree than other refractory materials



G-CERA® VEST



REFRACTORY INVESTMENT

G-CERA VEST is a high-density, super fine, refractory material with the same expansion curve as most porcelains. G-CERA VEST helps eliminate cracking and peeling and produces highly accurate models.

FEATURES AND BENEFITS

- Does not break with repeated firings
- Maintains accuracy through repeated firings
- Easy to separate from impression holds together
- Porcelain does not crack, peel, or fail on firing or cooling
- Refractory model does not crack or break
- Exceptionally smooth finish
- Better mixing
- Easy pouring
- Better adaptation to impression



Accessories

Ordering Information



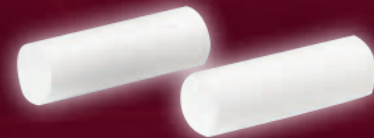
GC NEW CASTING LINER

GC New Casting Liner is an asbestos-free liner for dental casting rings which provides an optimal buffer to allow for total expansion while achieving accurate castings and reducing the likelihood of cracking. Made of high temperature hydrous calcium silicate fiberglass material, it is non-hazardous.



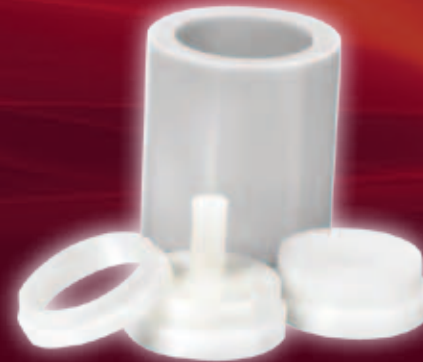
GC ONE WAY PLUNGER

GC One Way Plungers are intended to be used for GC Initial pressed ceramic systems, Initial PC and Initial IQ, Press-over-Metal and Press-over-Zircon. GC One Way Plungers were designed to work in conjunction with the GC Ring Base System.



RING BASE SYSTEMS

GC Ring Base Systems are ideal rings for pressable investments such as GC MultiPressVest. They come in three sizes: small 100g, medium 200g, and large 300g. GC Ring Base Systems are accurate and durable rings that can be reused time and time again.



GC Fujivest® II

- 800016 100x60g Powder
- 800019 67x90g Powder
- 800116 10kg Powder
- 800239 Introductory Package
- 800166 1x10kg Powder
- 800018 900mL Liquid
- 800078 900mL LE Liquid

GC Fujivest® Premium

- 890182 100x60g Powder
- 890183 40x150g Powder
- 890184 67x90g Powder
- 890186 900mL Liquid
- 890181 Introductory Package
- 890193 Promo Pack (50x150g)

GC Fujivest® Platinum

- 890176 100x60g Powder
- 890177 40x150g Powder
- 890178 67x90g Powder
- 890180 900mL Liquid
- 890175 Introductory Package
- 890194 Promo Pack (50x150g)

GC MultiPressVest®

- 800242 Introductory Package (6x100g Powder, 135mL Liquid)
- 800243 60x100g Powder
- 800244 900mL Liquid

G-CERA® ORBIT VEST

- 800035 Powder for Crowns/Veneers Contains: 30x33g
- 800036 Powder for Inlays Contains: 30x33g
- 800037 200mL Liquid

G-CERA® VEST

- 001148 30x33g Powder (Green)
- 001149 30x33g Powder (White)
- 001151 200mL Liquid

GC NEW CASTING LINER

- 001040 Contains: 20 Meter (64.2 ft.) Roll, 55mm Width, 1mm Thick

GC Initial™ IQ Ring Base Systems

- 872102 Small
- 872103 Medium
- 872104 Large

GC Initial™ IQ One Way Press Plunger

- 900428 30x2g
- 900429 30x5g





SKU #608000 • 800.323.7063 • www.gcamerica.com • www.gcamerica.com/training • © 2010 GC America Inc.

