

BIOSEAL™



BioSeal Bioceramic sealer is a ready-to-use injectable bioceramic cement developed for permanent root canal filling and sealing applications.



29 CLINICAL EVALUATORS

225 TOTAL USES

91% CLINICAL RATING

Includes: 10 gm Auto Mix Syringe,
15 Endo tips with mixers.

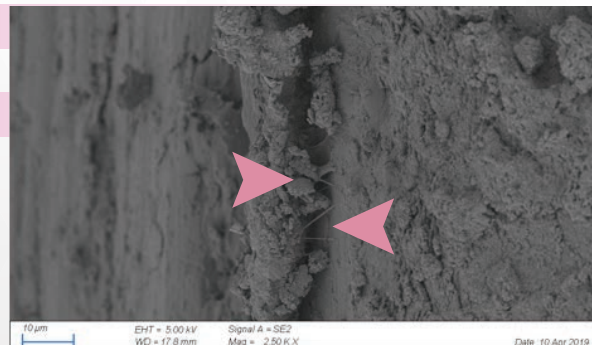
The Next Generation Bioceramic in Endodontics

Unlike ANY Other Bioceramic Endodontic Sealer.

BioSeal is an innovative endodontic sealer that utilizes patented Directed-Formation Technology to combine calcium silicate, calcium phosphate, bioactive glass, chlorhexidine, and biomimetic polymers. These elements collaborate to deliver proactive protection and ongoing reinforcement/remineralization for teeth that have undergone endodontic treatment. BioSeal can be used with room temperature and warm vertical techniques.

Reinforces tooth structure

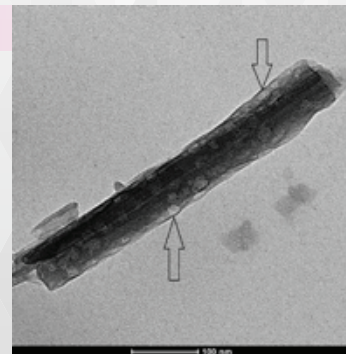
Hydroxyapatite Producing



Chlorhexidine (CHX) incorporation

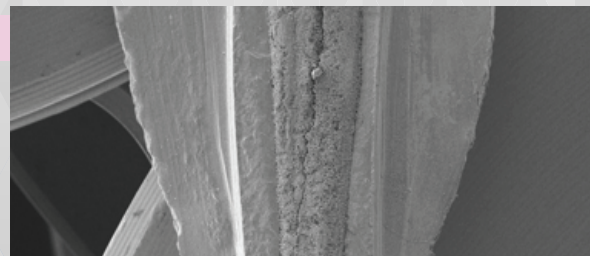
The patented host inclusion particles slowly release chlorhexidine to significantly increase long-term substantively.

The transmission electron microscopy image left shows the CHX sustained release.



Chemical Bond of Sealer

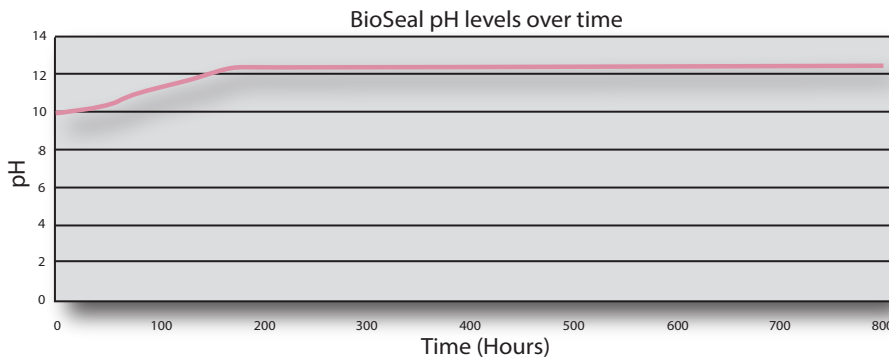
Note the superior integration of the BioSeal sealer with the surrounding dentin.



Biomimetic Polymers

The polymers mimic natural biology (mimics endogenously existing proteins in growing teeth) that serve as nucleation sites - by organizing ions and accelerating the remineralization process.

Antibacterial (+12 pH upon setting)



BioSeal's setting reactions result in a highly alkaline pH, therefore provides an environment detrimental for bacterial growth.

Hydrophilic

BioSeal's extremely small particle size and hydrophilic nature allows it to flow into all aspects of the canal anatomy.

Highly Radiopaque

Highly Biocompatible

No Shrinkage

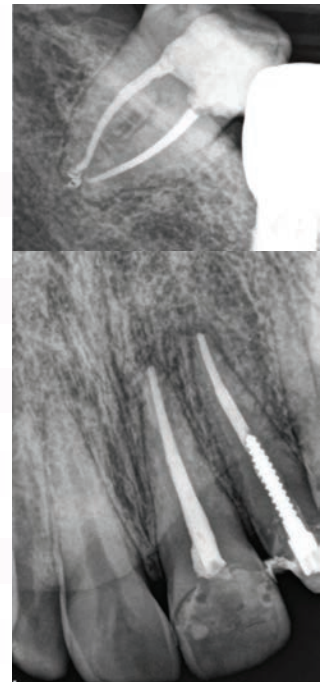
Ideal Working and Setting Time

User Friendly (Automix Syringable Sealer)

No Expensive Armamentarium

Cost Effective

(Considerably Less Expensive Than Carriers and Competitive BC Sealers)



ORDERING INFORMATION

BioSeal Endodontic Sealer:

1640-00: Includes: 10 gm Auto Mix Syringe, 15 Endo tips with mixers.

Mixing Tip Refills

1640-15: 15 - Endo tips

For our complete line of patented dental products please visit our website at: www.edsdental.com *Data On File